

Title: Discussion 1

Date: Nov 05, 2015 05:00 PM

URL: <http://pirsa.org/15110073>

Abstract:

2d $t - J$

d-wave SC

striped SC : d-wave state + "dewotzware"

"anti-phase" SC = PDW

locally all these states look the same.

Fermion

2d $t - J$

d-wave SC

striped SC : d-wave state + "dewotzware"

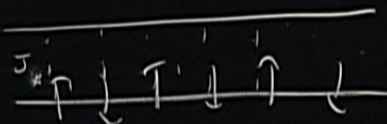
"anti-phase" SC = PDW

locally all these states look the same.

Energy level on

Kondo - Heisenberg

$C150$



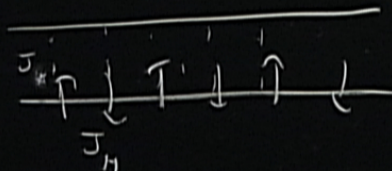
Sickema, Affleck, White

Zachar, Tsvelik

CAUTION
DO NOT TOUCH THE BOARD
OR THE BOARDER
OR THE BOARDER

CAUTION
DO NOT TOUCH THE BOARD
OR THE BOARDER
OR THE BOARDER

Kondo - Heisenberg



Srikuma, Affleck, White

Zachar, Tsvelik

Berg, SK, EF

C1SD

all fermion bilinears decay expon

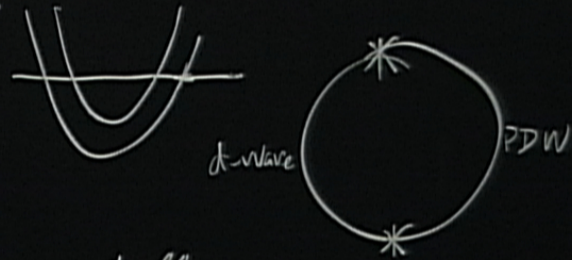
$$\vec{\Delta}_{sc} \cdot \vec{N} \sim \text{PDW}$$

Cho, R. Soto-Garrido, EF

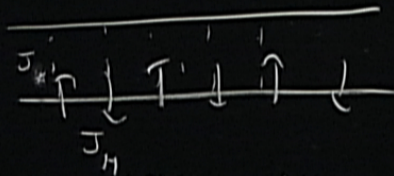
CAUTION
DO NOT TOUCH THE BOARD
OR THE BOARD OR THE BOARD
OR THE BOARD OR THE BOARD

CAUTION
DO NOT TOUCH THE BOARD
OR THE BOARD OR THE BOARD
OR THE BOARD OR THE BOARD

Kondo - Heisenberg



C150



Srikema, Affleck, White

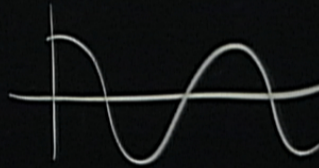
Zachar, Tsvelik

Borg, SK, EF

all fermion bilinears decay exponentially

$$\vec{\Delta}_{SC} \cdot \vec{N} \sim \text{PDW}$$

Cho, R. Soto-Garrido, EF



CAUTION
DO NOT TOUCH THE BOARD
IF YOU DO YOU WILL BE
HEAVILY PUNISHED

CAUTION
DO NOT TOUCH THE BOARD
IF YOU DO YOU WILL BE
HEAVILY PUNISHED

2d $t-J$

d-wave SC

striped SC : d-wave state + "density wave"

"anti-phase" SC : PDW

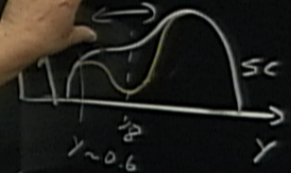
locally all these states look the same

Energy kivelon

LBCO $x=1/8$

YBCO

T ↑



2d t - J

d-wave SC

striped SC : d-wave state + "density wave"

"anti-phase" SC : PDW

locally all these states look the same.

Energy level

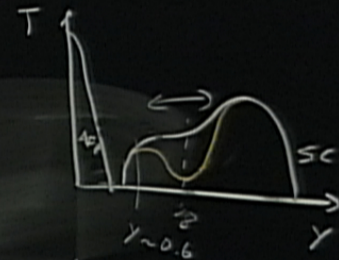
LBCO



LBCO

$x=1/8$

YBCO



2d $t-J$

d-wave SC

striped SC : d-wave state + "density wave"

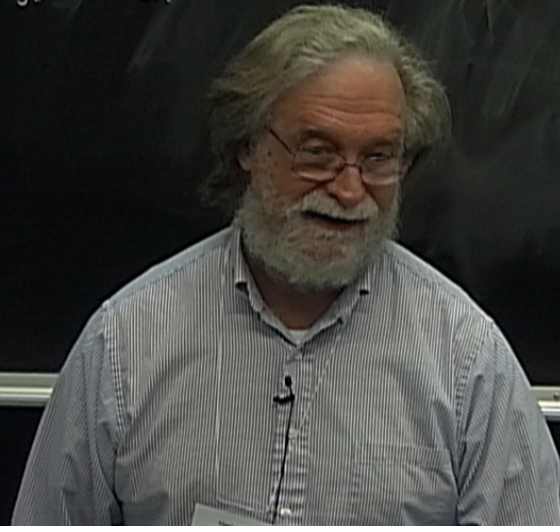
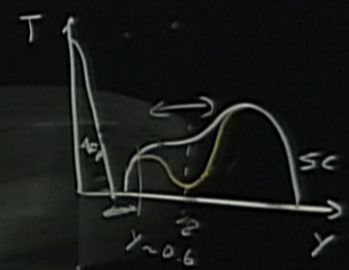
"anti-phase" SC : PDW

locally all these states look the same.

Energy level

LBCO $x=1/8$

YBCO



2d t - J

d-wave SC

striped SC : d-wave state + "density wave"

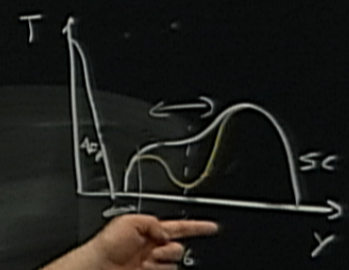
"anti-phase" SC = PDW

locally all these states look the same

Energy level

LBCO $x=1/8$

YBCO



2d $t-J$

d-wave SC

striped SC : d-wave state + "density wave"

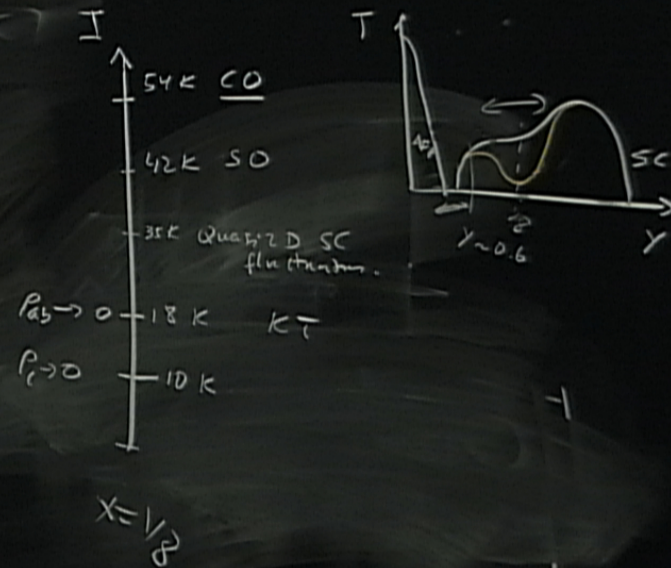
"anti-phase" SC : PDW

locally all these states look the same.

Energy level

LBCO $x=1/8$

YBCO



2d t - J

d-wave SC

Striped SC : d-wave state + "density wave"

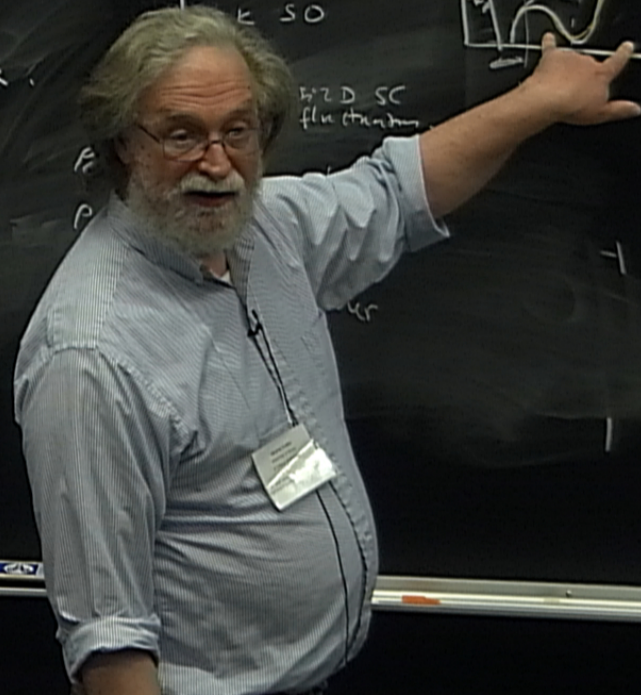
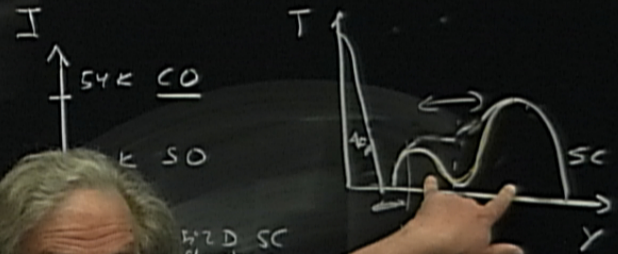
"anti-phase" SC : PDW

locally all these states look the same

Energy level in

LBCO $x=1/8$

YBCO



2d t - J

d-wave SC

Striped SC : d-wave state + "density wave"

"anti-phase" SC : PDW

locally all these states look the same.

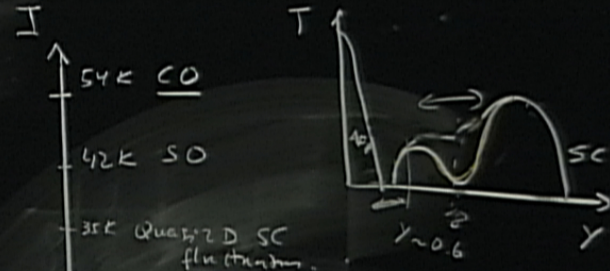
Energy level in



LBCO

$x=1/2$

YBCO



$P_c \rightarrow 0$ 18 K K_T

$P_c \rightarrow 0$ 10 K

4 K Misner

$x=1/2$

2d $t - J$

d-wave SC

striped SC : d-wave state + "density wave"

"anti-phase" SC : PDW

locally all these states look the same

Energy k

$$\Delta(r) = \Delta_0 e^{iQ \cdot r}$$

$$+ \Delta_{-Q}(r) e^{-iQ \cdot r}$$

$$\Delta_Q \quad \Delta_{-Q} \quad \Delta_{4K}^*$$

LBCO $x=1/8$

YBCO

