

Title: Buttoned up and down: European Fashion in 1905

Date: Oct 08, 2005 07:00 PM

URL: <http://pirsa.org/05100014>

Abstract: <kw> Russell Smith, European fashion, early 20th century, 19th century, Edwardian Era, social life, England, France, aesthetics </kw>



# EinsteinFest

The Man | The Science | The Times | The Legacy

Friday, September 30 to Sunday, October 23 | 2005































3565



LA TOILETTE AU THÉÂTRE

*M<sup>o</sup> Cavell*

*Athénée*















ARLETTE DORGÈRE













246 Lady's golfing costume, 1907



247 Day dress, 1907



*Adolf Münzer*

AMUSEMENTS

1906







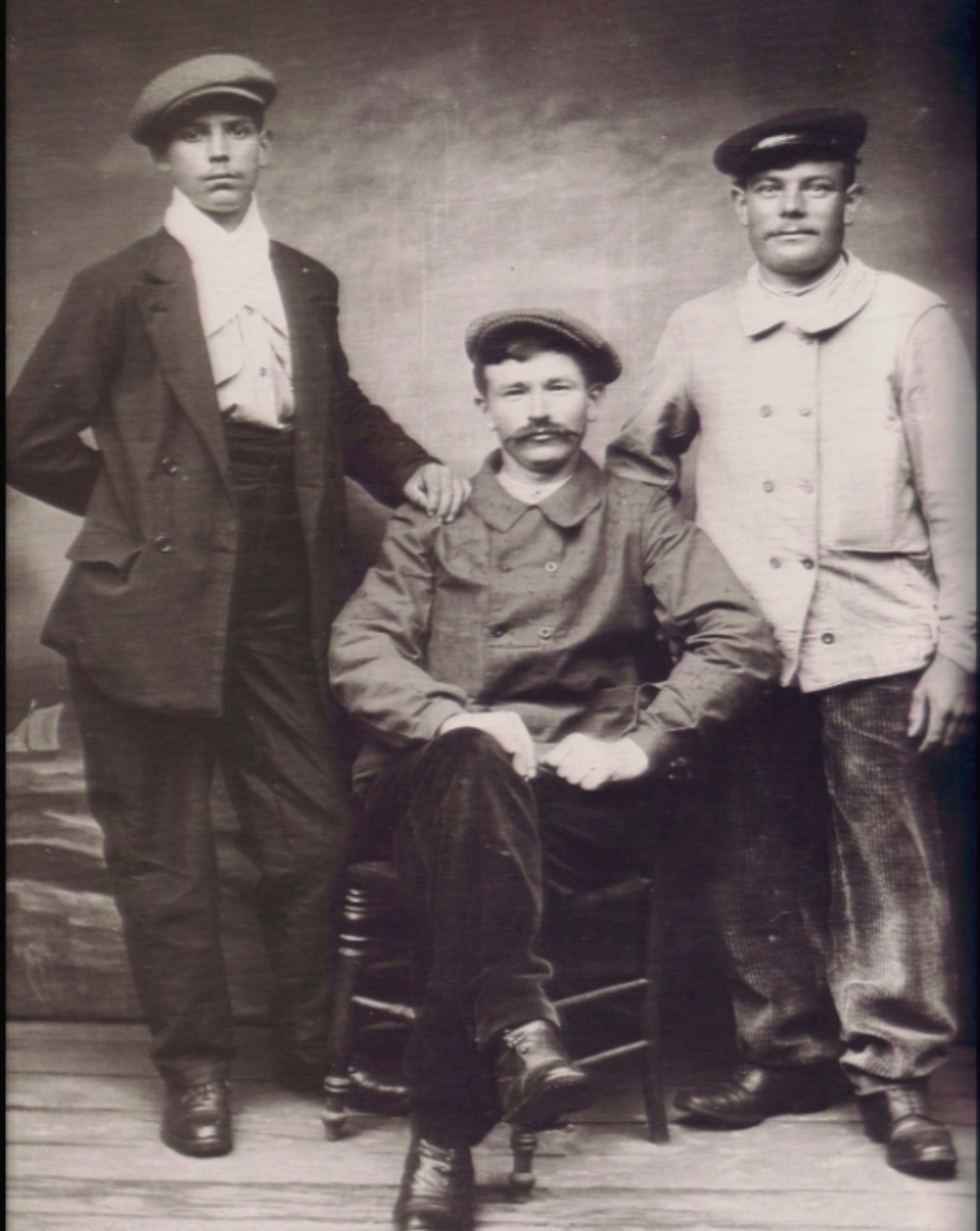




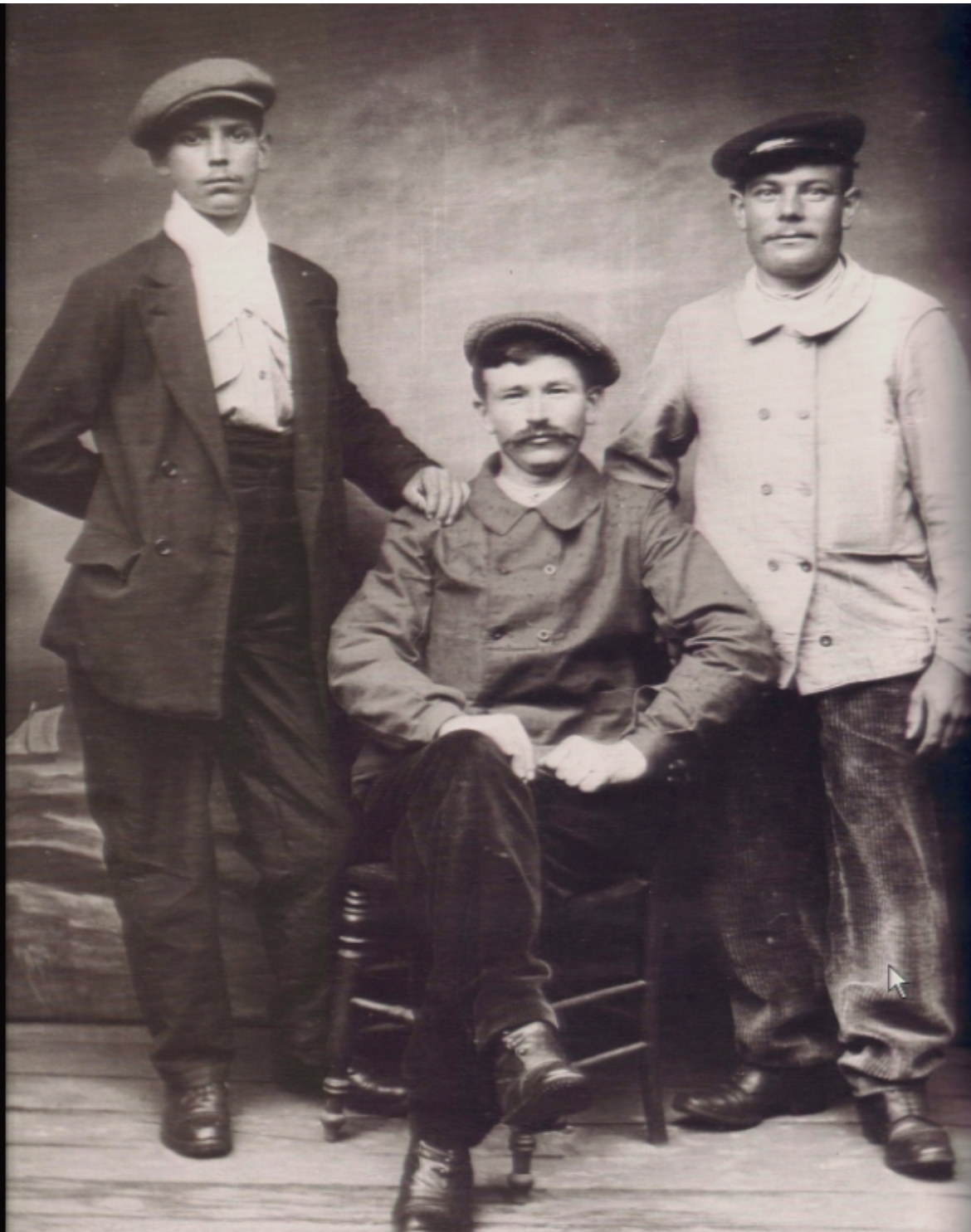




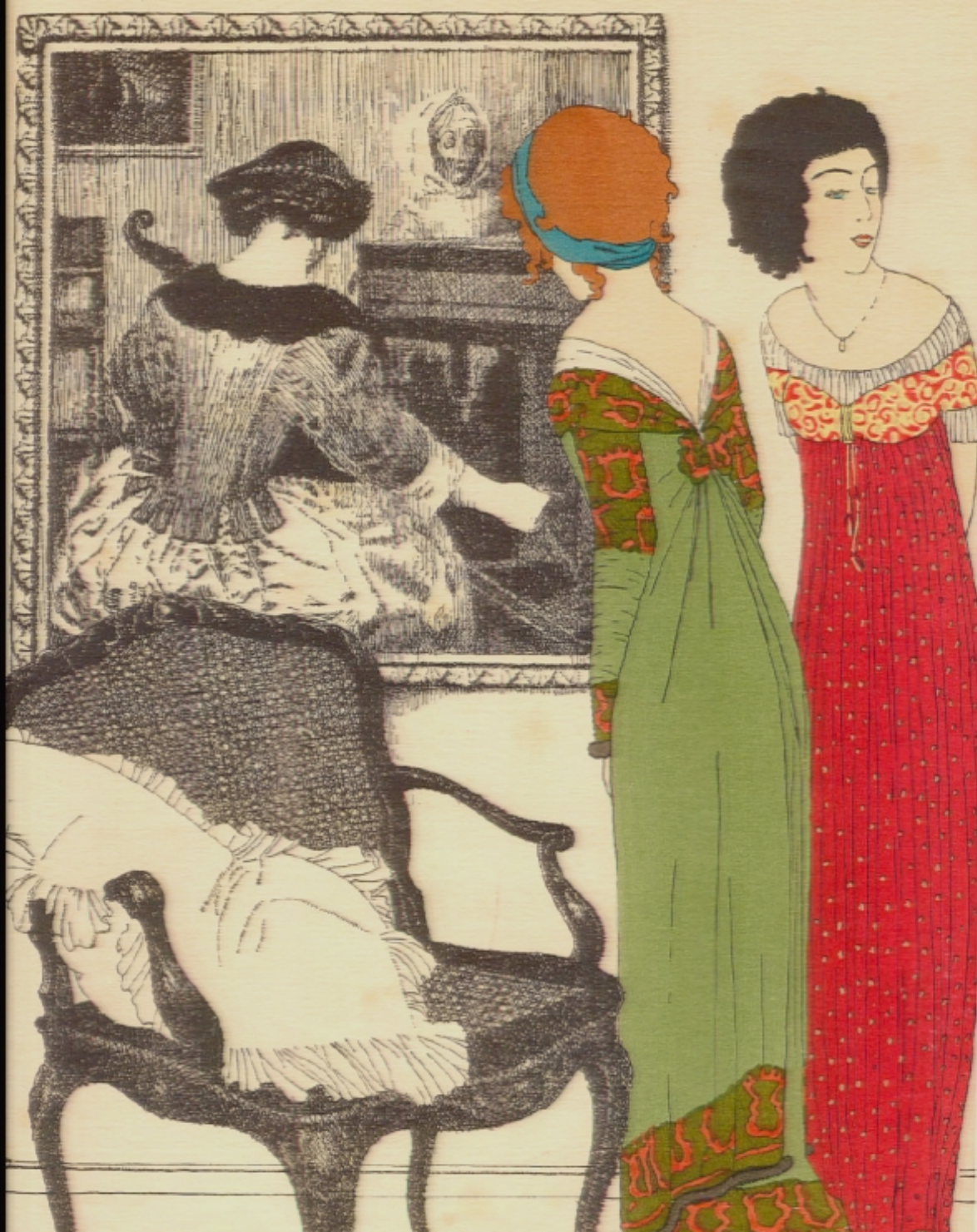






















1905



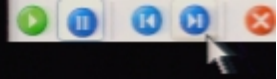
1910



1910





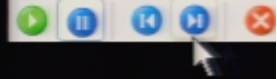














253, 254 Emancipated woman:  
Hobble-skirt dresses and  
hobble garter, 1910



Robe de taffetas gris a col. et manchettes de linon.

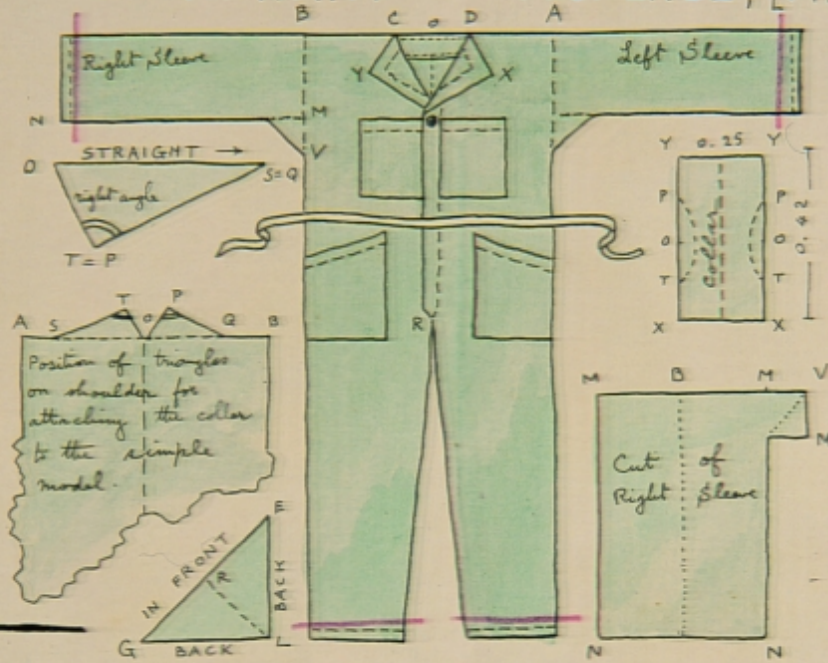






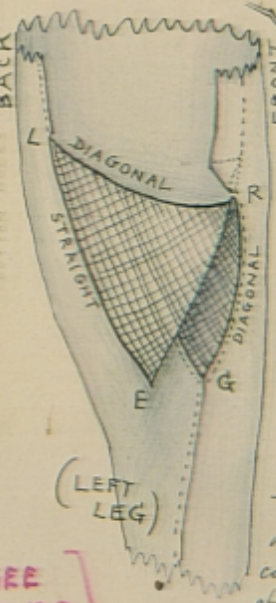
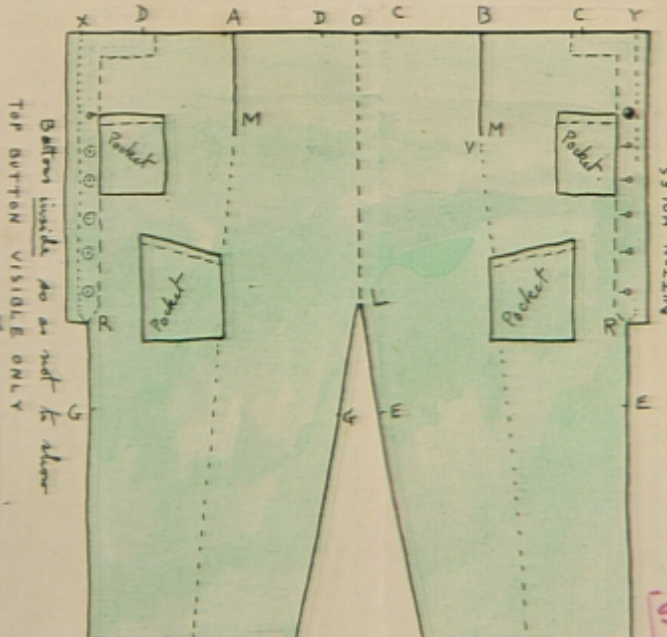
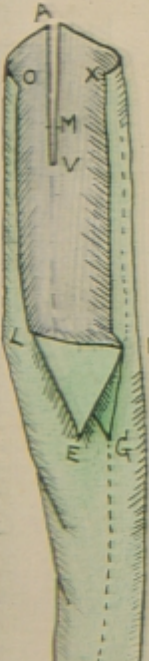
# HOW TO CUT OUT THE "TUTA," [ONE PIECE, STRAIGHT LINE GARMENT FOR MEN AND BOYS] DESIGNED BY THAYAHT OF FLORENCE, [ITALY]

This one piece garment is worn with a strip of light-colored stuff at the waist, white socks and sandals. It looks beautiful when worn without hat and open white collar. A simple leather belt also looks well.



N.B. This model will suit all figures of normal size. The seams are already calculated in the measures given here (See printed DESIGN FOR the measures in centimeters). Before cutting the stuff it is well to soak it in water so as to make it shrink and also to soften the texture freeing it from all stretching. The TUTA's chief charm is its soft falling lines following those of the tunic.

Sectional view of Left side of TUTA showing position of triangle GLE pulled over along RL. AV is the slit when the sleeve is drawn in.



Showing how the triangle GLE gets pulled into curved lines as soon as the TUTA is worn. The triangle allows complete freedom of movement and





Robert and Maurine Rothschild Collection



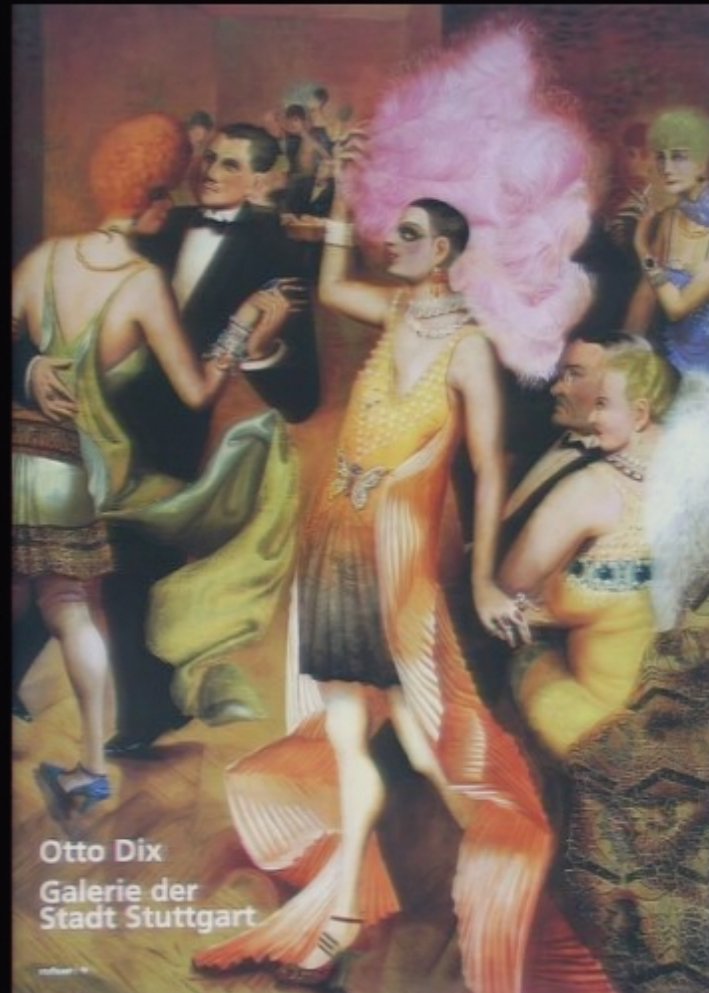












Otto Dix  
Galerie der  
Stadt Stuttgart





At Charleston, 1926. Masculine elements in female costume

